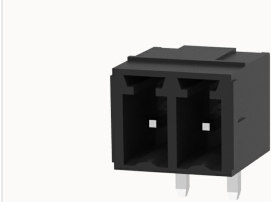


## Overview

### Product information



### 15EDGRC-THR-3.81 Reel package-10030003941

Pluggable terminal blocks, Rated current: 8A. Rated voltage (III/2) : 250V, pitch: 3.81mm, Color: black, Contact surface : Tin

### Product advantages

- Suitable for SMT welding process
- The plug direction is parallel to the PCB, Can meet the needs of different connectors

### Product certification



## Technical data

### Product drawing

### 3D model

□

### Processing notes

|         |  |
|---------|--|
| Process | Reflow soldering/wave soldering/manual soldering |
|---------|--|

### Electrical parameters UL

|                   |      |
|-------------------|------|
| Rated voltage (B) | 300V |
| Rated current (B) | 8A   |

### Electrical parameters IEC

|                           |       |
|---------------------------|-------|
| Rated current             | 250V  |
|                           | 8A    |
| Rated current(II/2)       | 250V  |
| Rated surge voltage(II/2) | 2.5KV |

### Item properties

|                      |                               |
|----------------------|-------------------------------|
| Type of installation | PCB welding                   |
| Pin arrangement      | Single row in a straight line |
| Pitch                | 3.81mm                        |
| Number of potentials | 2                             |
| Pluggable or not     | Yes                           |
| Number of rows       | 1                             |

### Material data

|                            |                                      |
|----------------------------|--------------------------------------|
| Environmental items        | Compliant with REACH/RoHS            |
| Contact material           | copper                               |
| Contact zone metal surface | tin-plated                           |
| Insulation Materials       | High temperature resistant materials |
| Insulating material group  | IIIa                                 |
| Flammability rating        | UL94V-0                              |

### Mechanical tests

|                    |                  |
|--------------------|------------------|
| Test Specification | IEC61984/ UL1059 |
|--------------------|------------------|

### Environmental data

|                                 |             |
|---------------------------------|-------------|
| Ambient temperature (operation) | -40°C~130°C |
|---------------------------------|-------------|

### Accessories

#### Tool

|                |   |
|----------------|---|
| Screwdriver    | / |
| Operating tool | / |

#### Accessories

|              |   |
|--------------|---|
| Coding strip | / |
|--------------|---|

|               |   |
|---------------|---|
| Bridge        | / |
| Marking strip | / |
| Others        | / |

#### Business data

|                                     |             |
|-------------------------------------|-------------|
| Order number                        | 10030003941 |
| Packing unit                        | 470         |
| Minimum order quantity              | 30          |
| Products weight (without packaging) | 0.6         |