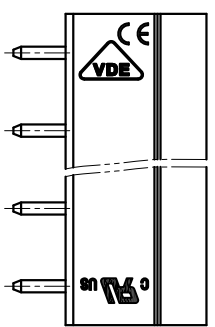
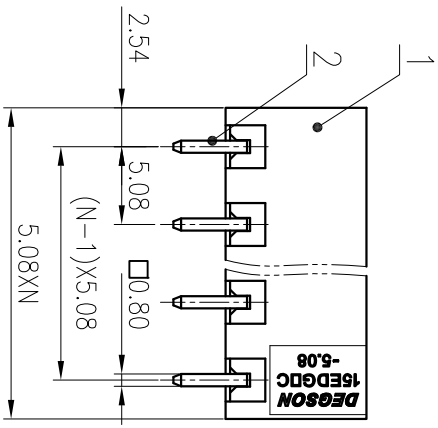
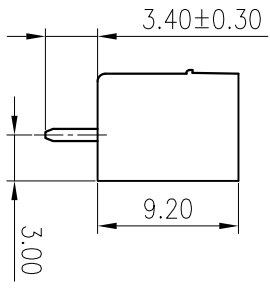
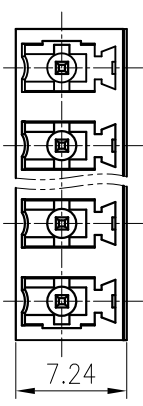
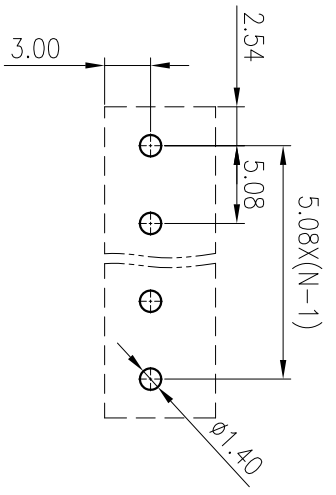


公差	General	tolerances(mm)
0	>3	>18
~	~	~
3	6	10
~	~	~
±0.12	±0.18	±0.22
±0.26	±0.31	±0.37
±0.57	±0.80	±0.93
±1.05	±1.15	±1.60
±2.20	±2.50	
±2.50		
0.1/10		
±2		



管 中 心
发 专 用
2020.03.26
(仅限内部使用, 对外无效)

PCB LAYOUT



ITEM	NAME OF PART	MATERIAL	NOTES
2	Pin	Copper Alloy	Sn Plated
1	Housing	PA66	UL94V-0

MATERIAL:	SURFACE: /		
MAT NO.:	/		
STATUS:	/		
APPR: LanCH	2020.03.26	NAME:	15EDGVC-5.08-XXP-1Y-00A(H)
CHKD: YuJZ	2020.03.26	DRAWING NO.:	15EDGVC-5.08-C01
DRF: Zhuwm	2007.12.14	TYPE:	CUSTOMER DRAWING
DRFT	DATE	SCALE:	2:1
REV	ECN	DESCRIPTION	Drawing Update
REV	ECN	DESCRIPTION	Drawing Update

宁波高松电子有限公司
NINGBO DEGSON ELECTRICAL CO., LTD

15EDGVC-5.08-XXP-1Y-00A(H)

REV	ECN	DESCRIPTION	DATE
11		Drawing Update	2020.03.26