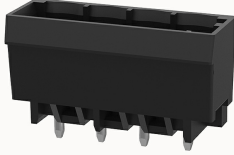


## Overview

### Product information



## 8EDGVC-THR-5.0 Reel package-10030003810

Pluggable terminal blocks, Rated current:20A, Rated voltage (III/3) :320V, pitch:5.0mm, Color:gray, Contact surface :Tin

### Product advantages

- Suitable for SMT welding process
- The plug direction is perpendicular to PCB, Can meet the needs of different connectors

### Product certification



## Technical data

### Product drawing

### 3D model

□

### Processing notes

Process	Reflow soldering/wave soldering/manual soldering
---------	--

### Electrical parameters UL

Rated voltage (B)	300V
Rated voltage (D)	300V
Rated current (B)	15A
Rated current (D)	10A

### Electrical parameters IEC

Rated current(III/3)	320V
Rated current	320V

	20A
Rated surge voltage(III/3)	4KV

#### Item properties

Type of installation	PCB welding
Pin arrangement	Single row in a straight line
Pitch	5mm
Number of potentials	4
Pluggable or not	Yes
Number of rows	1

#### Material data

Environmental items	Compliant with REACH/RoHS
Contact material	copper
Contact point metal surface	tin-plated
Contact zone metal surface	tin-plated
Insulation Materials	High temperature resistant materials
Insulating material group	IIIa
Flammability rating	UL94V-0

#### Mechanical tests

Test Specification	IEC61984/ UL1059
--------------------	------------------

#### Environmental data

Ambient temperature (operation)	-40°C~130°C
---------------------------------	-------------

#### Accessories

##### Tool

Screwdriver	/
-------------	---

Operating tool	/
----------------	---

**Accessories**

Coding strip	DG014
Bridge	/
Marking strip	/
Others	/

**Business data**

Order number	10030003810
Packing unit	140
Minimum order quantity	30
Products weight (without packaging)	1.8