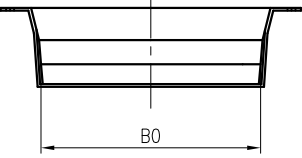
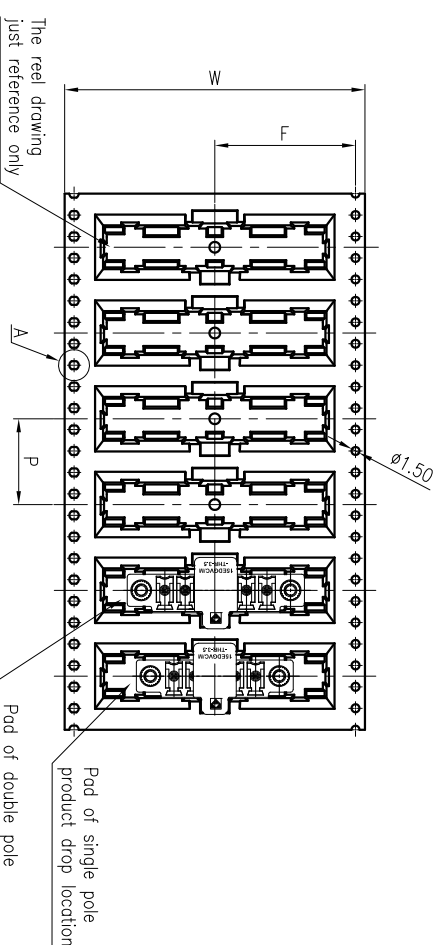
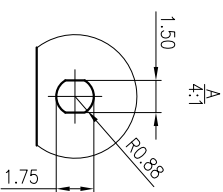
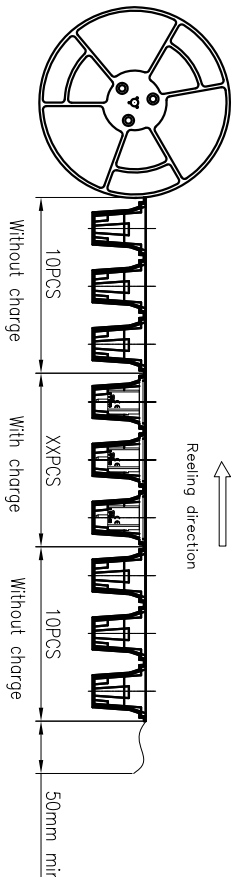
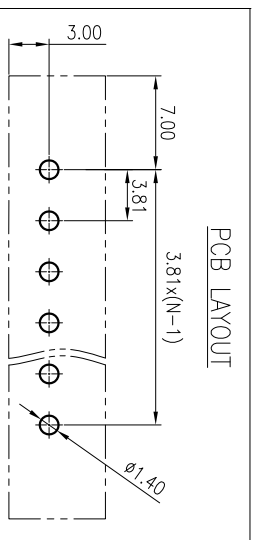
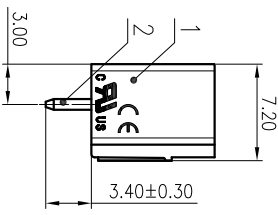
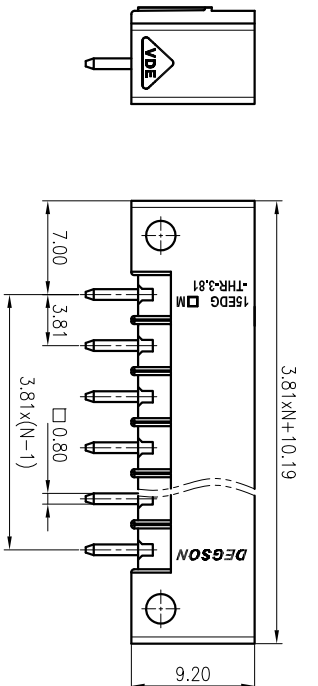
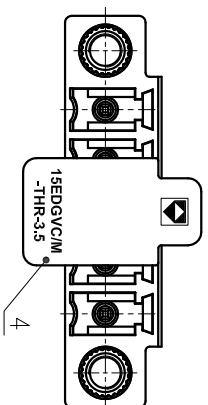
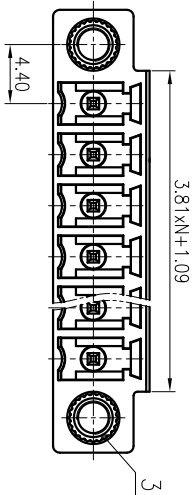


Product drawing Scale 2.5:1



Pole	Width /w	Pitch /P	Width /F	Width /B0	Qty. per reel	Qty. per carton
2P	32mm	16mm	14.25mm	18.11mm	200	8
3~8P	56mm	20mm	26.25mm	40.97mm	200	5
9P	72mm	16mm	34.25mm	59.47mm	180	3
10~13P	72mm	16mm	34.25mm	59.47mm	200	3

4	Cop	Thermoplastic	UL94V-0
3	Screw cop	Copper alloy	M2.5
2	Pin	Copper	Sn Plated
1	Housing	Thermoplastic	UL94V-0
ITEM	NAME OF PART	MATERIAL	NOTES

UL 标准/UL Standard:	B
额定电压/Rated Voltage(V)/Current(A)	300/8
IEC 标准/IEC Standard:	300/8
过压类别/Overvoltage Category/污秽等级/ Pollution Degree	II / 2
额定电压/电流/Rated Voltage(V)/Current(A)	250/8
额定脉冲电压(KV)/Rate Impulse Voltage(KV)	2.5
间距/Pitch(mm)/线数范围/Poles	3.81 /N=02~13P
使用温度范围/Operating temperature(°C)	-40~+130
符合RoHS环保要求/Conform to RoHS	Yes

MATERIAL:	SURFACE: /
MAT NO.:	/
STATUS:	/
APPD:	Lan CHH 2020.05.26
NAME:	15EDGVM-THR-3.81-XXP-1Y-00A(H)
DRAWING NO.:	15EDGVM-THR-3.81-C01
TYPE:	CUSTOMER DRAWING
SCALE:	1:1
SHEET:	1/1

TR	17-0159	Change the drawing and tolerance table	Yu.Zjh	2020.05.26
TD	17-0015	Add engrave	LY	2019.05.29
TR	17-0015	Design Change	CWZ	2017.02.09
REV	ECN	DESCRIPTION	DRAFT	DATE

尺寸/Size (mm)	0	>3	>6	>10	>18	>30	>50	>80	>120	>180	>250	>315	>500	0.1/0
~	~	~	~	~	~	~	~	~	~	~	~	~	~	~
3	6	10	18	30	50	80	120	180	250	315	400	500	>800	0.1/0
±0.12	±0.18	±0.22	±0.26	±0.31	±0.37	±0.57	±0.90	±0.93	±1.05	±1.15	±1.60	±2.20	±2.50	±2

文管中心
研发专用
2020.05.26
(仅限内部使用, 对外无效)