

Battery Contact Kits ("AA")

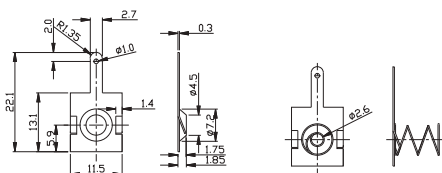
AA (UM3)



| Part no. | Battery |
|--------------|--------------|
| G0311 | AA (UM3) X 1 |
| G0310 | AA (UM3) X 2 |
| G0313 | AA (UM3) X 3 |
| G0312 | AA (UM3) X 4 |

G0311

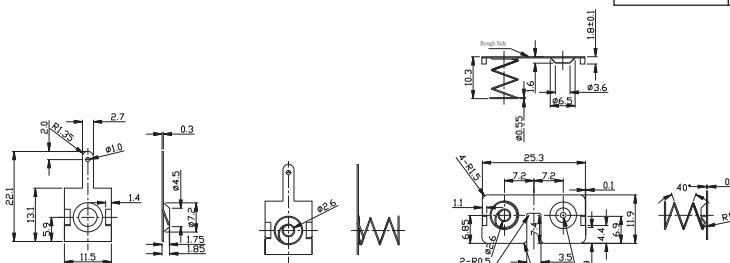
30310-000(X1)+30320-000(X1)



30310-000 30320-000

G0310

30310-000(X1)+30320-000(X1)+30500-000(X1)



30310-000 30320-000 30500-000

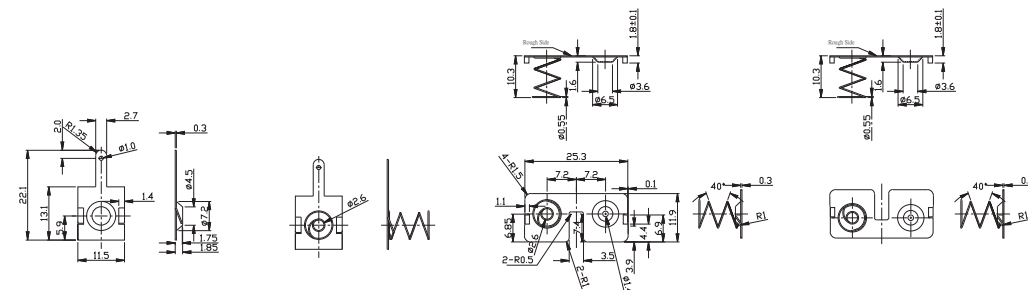
| | Metal Parts | Spring |
|----------|------------------|---------------|
| Material | SPTe (tin plate) | Steel |
| Finish | Tin plated | Nickel plated |

● Example: G909G with G0310



G0313

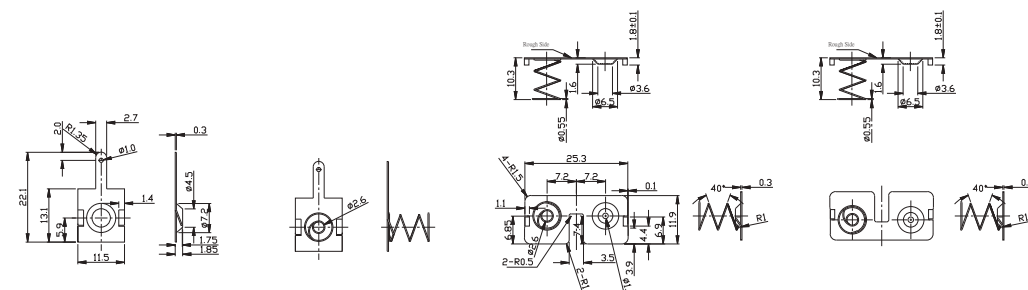
30310-000(X1)+30320-000(X1)+30500-000(X1)+30500-040(X1)



30310-000 30320-000 30500-000 30500-040

G0312

30310-000(X1)+30320-000(X1)+30500-000(X1)+30500-040(X2)



30310-000 30320-000 30500-000 30500-040

Battery Contact Kits ("AAA")

AAA (UM4)

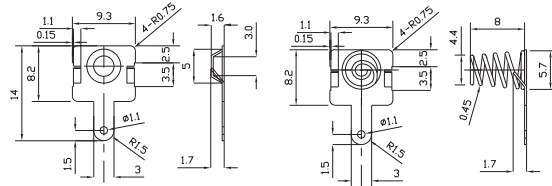


| Part no. | Battery |
|--------------|---------------|
| G0411 | AAA (UM4) X 1 |
| G0410 | AAA (UM4) X 2 |
| G0413 | AAA (UM4) X 3 |
| G0412 | AAA (UM4) X 4 |



G0411

70978-000(X1)+70979-000



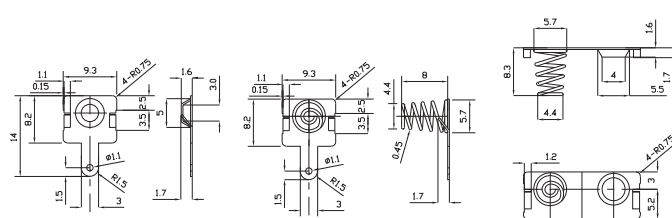
70978-000

70979-000



G0410

70978-000(X1)+70979-000(X1)+70980-000(X1)



70978-000

70979-000

70980-000

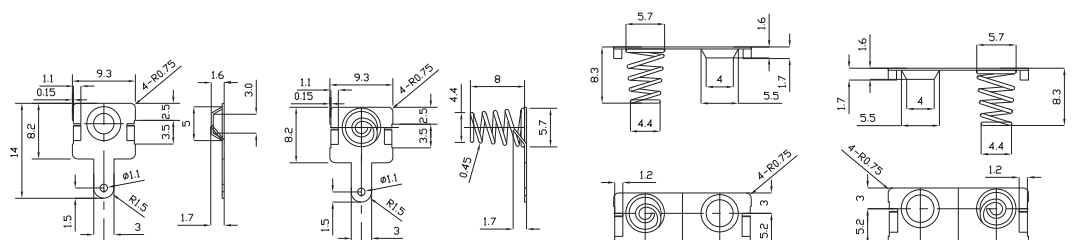
| | Metal Parts | Spring |
|----------|------------------|---------------|
| Material | SPTe (tin plate) | Steel |
| Finish | Tin plated | Nickel plated |

● Example: G808B(BC) with G0412



G0413

70978-000(X1)+70979-000(X1)+70980-000(X1)+70980-040(X1)



70978-000

70979-000

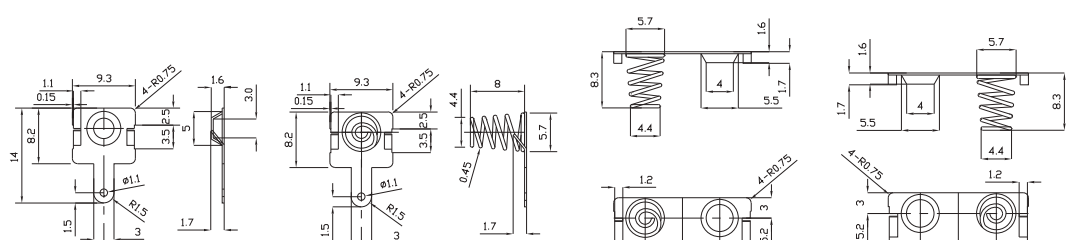
70980-000

70980-040



G0412

70978-000(X1)+70979-000(X1)+70980-000(X1)+70980-040(X2)



70978-000

70979-000

70980-000

70980-040