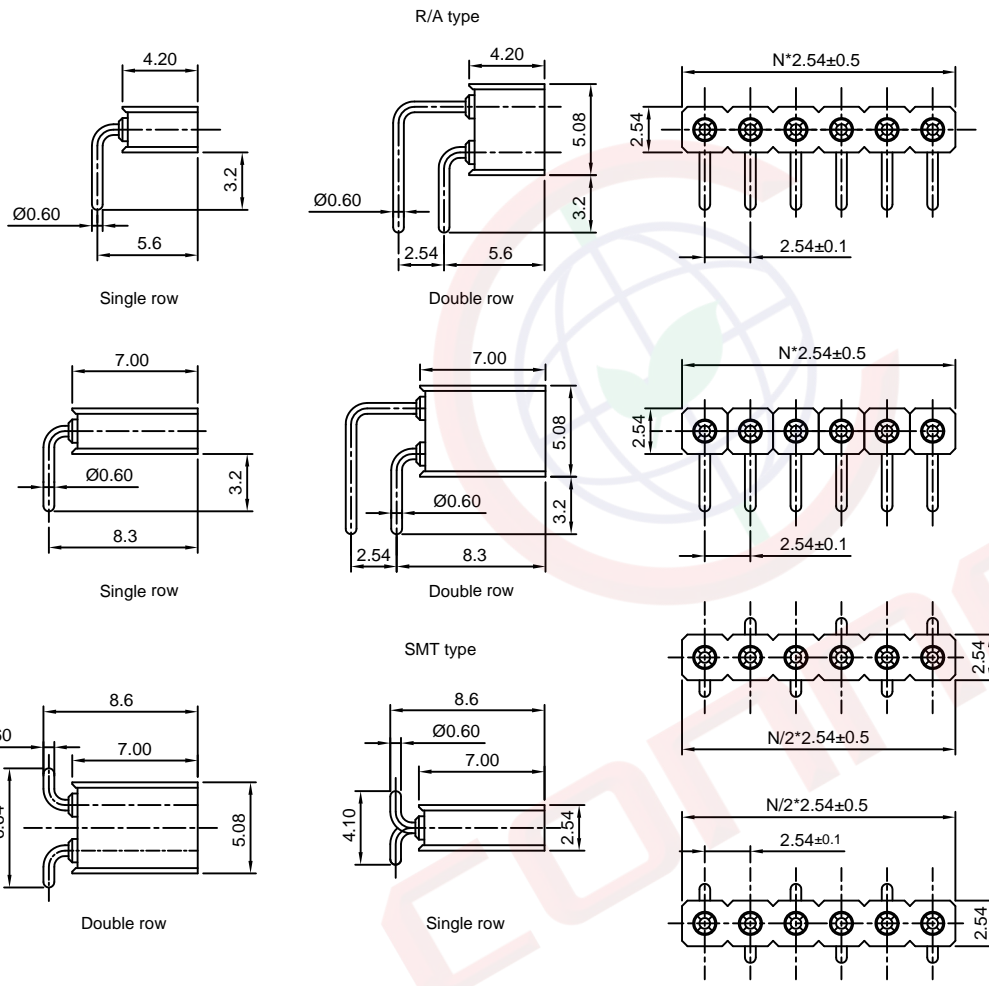
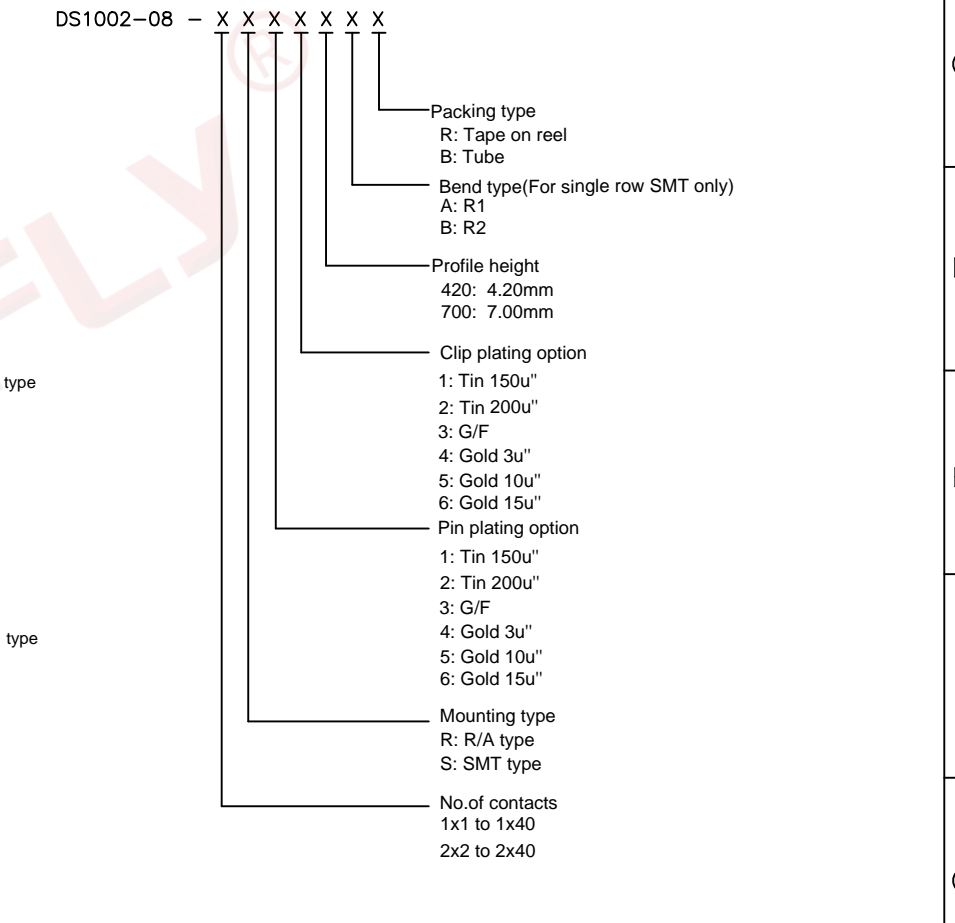


Dept	
Qty	
DC	1
ED	1
IE	1
ISO	1
PD	1
R&D	1
SD	1
QA	1
QC	1
QE	1

The information provided herein is from CONNELY Electronic Co., Ltd. and is confidential. Any disclosure to a party other than the recipient is prohibited. The intellectual properties and its rights contained herein, including but not limited to, trademarks, patents, copyrights, trade secrets, and technical know-how, are owned exclusively by CONNELY or its affiliates. Unauthorized use, reproduction, or distribution of this information is strictly prohibited. CONNELY may enforce its intellectual property rights at its own discretion, failures or delays to exercise such rights does not constitute a waiver of such rights.

REV.	DESCRIPTION	DRAWN	CHECKED	APPROVED
A	NEW RELEASE	JLZ 07/11/14'		LJC 07/11/14'
B	DRAWING UPDATE	JLZ 07/21/18'		

- NOTES:
- Electrical:
    - Current rating:3A max.
    - Contact resistance:20mΩ max.
    - Insulation resistance:1000MΩ min at V=100V.
    - Operating voltage:60V AC/DC.
  - Product number code:



(Series Image-Reference Only)

GENERAL TOLERANCE		ANGLE TOLERANCE		PROJECTION		TITLE	SMT & R/A IC SOCKET PITCH 2.54mm	
X.	±0.60	X.	±5°	UNITS	mm	MATING PIN Ø0.6		
.X	±0.38	.X	±3°	SHEET SIZE	A4	SERIES	DS1002-08 SERIES	
.XX	±0.25	.XX	±2°					
DRAWING TYPE		CUSTOMER		<b>晨翔电子有限公司</b> <b>CONNFLY CONNELY ELECTRONIC CO. LTD</b>				
SCALE		1:1						
DRAWING NO.		C-DS1002-08-XXXXX-B						