

Dept	
Qty	
DC	1
ED	1
IE	1
ISO	1
PD	1
R&D	1
SD	1
QA	1
QC	1
QF	1

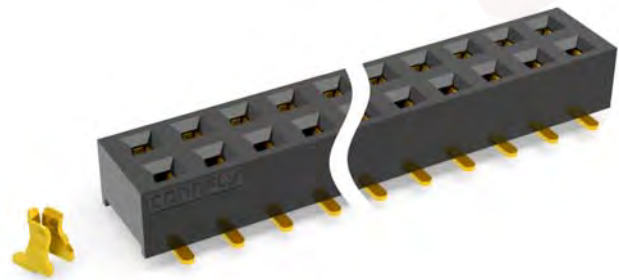
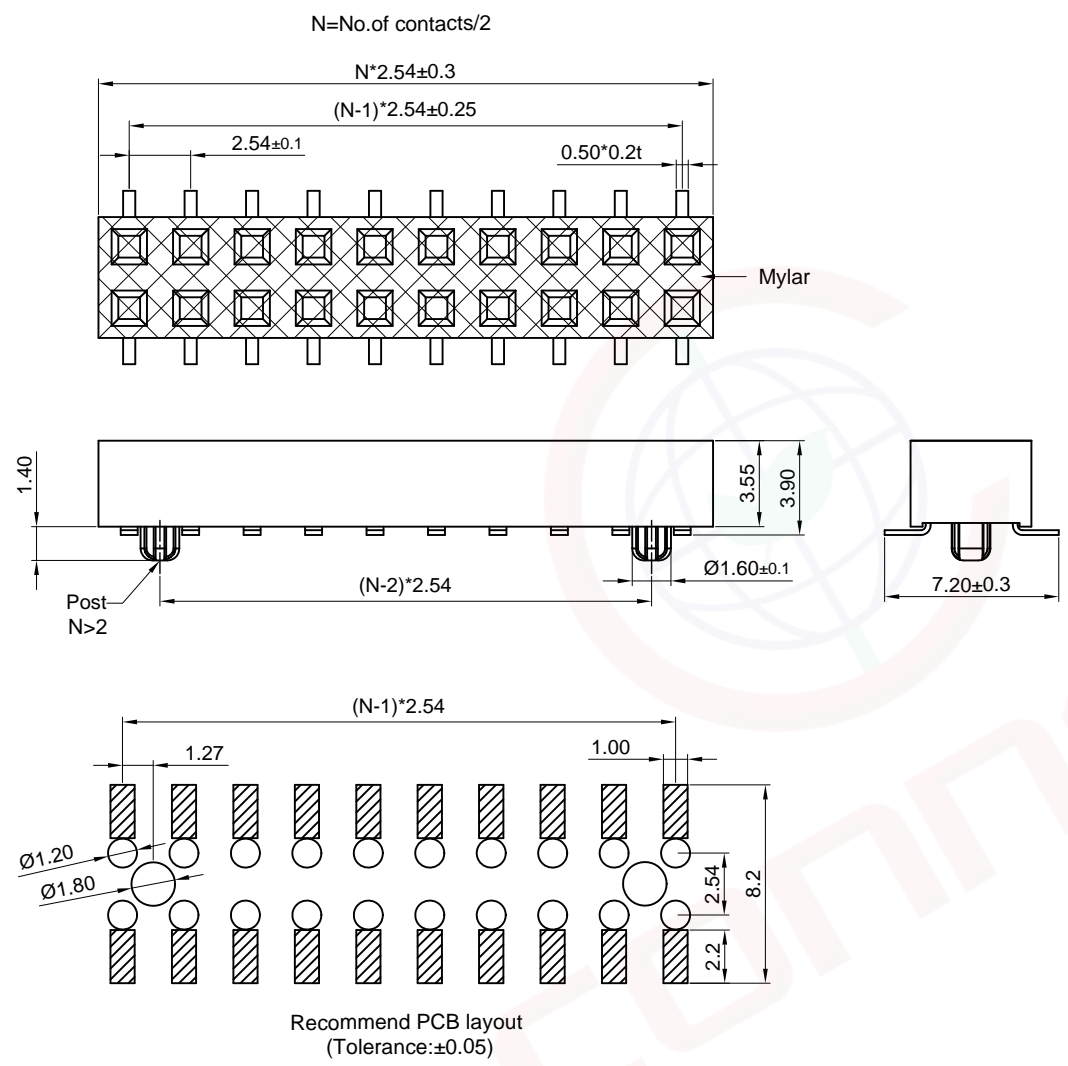
The information provided herein is from CONNELY Electronic Co., Ltd. and is confidential. Any disclosure to a party other than the recipient is prohibited. The intellectual properties and its rights contained herein, including but not limited to, trademarks, patents, copyrights, trade secrets, and technical know-how, are owned exclusively by CONNELY or its affiliates. Unauthorized use or reproduction of any part of this document without the prior written permission of CONNELY may result in legal action. CONNELY may enforce its intellectual property rights at its own discretion, failures or delays to exercise such rights does not constitute a waiver of such rights.

REV.	DESCRIPTION	DRAWN	CHECKED	APPROVED
A	NEW RELEASE	LJC 05/05/14'		LJC 05/05/14'
B	DRAWING UPDATE	JLZ 01/10/18'	HZW 01/10/18'	LJC 01/10/18'
C	DRAWING UPDATE	JLZ 07/06/18'		

- NOTES:
- Materials
    - Insulator material: High temp. Thermoplastic (UL 94V-0).
    - Contact material: Copper alloy.
  - Specification
    - Temperature: -40° to +105°C.
    - Dielectric withstanding voltage: AC 600V AC.
    - Insulation resistance: 1000MΩ min.
    - Current rating: 3A.
  - Product number code:
 

DS1023-26 - X X X X X X

- Post support
- S:W/ post
- X:W/O post
- Packing type
- R:Tape on reel
- B:Tube
- Mylar support
- M:W/ Mylar
- Contact plating
- 8: Full gold flash
- Housing color
- B:Black
- No.of contacts
- 2x2-2x20



(Series Image-Reference Only)

GENERAL TOLERANCE		ANGLE TOLERANCE	
X.	±0.60	X.	±5°
.X	±0.38	.X	±3°
.XX	±0.25	.XX	±2°
DRAWING TYPE		CUSTOMER	
SCALE	1:1	SHEET	1 OF 1
DRAWING NO.	C-DS1023-26-XXXXX-C		

PROJECTION		TITLE	2.54mm FEMALE HEADER
UNITS	mm		DUAL ROW SMT TYPE H=3.55mm
SHEET SIZE	A4	SERIES	DS1023-26 SERIES
		晨翔电子有限公司	
		CONNFLY CONNELY ELECTRONIC CO. LTD	