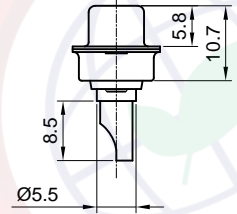
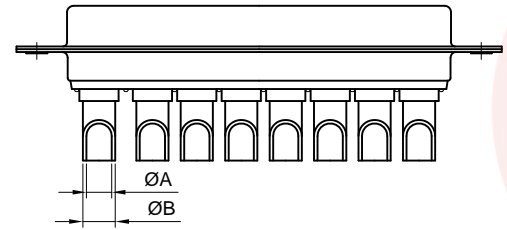
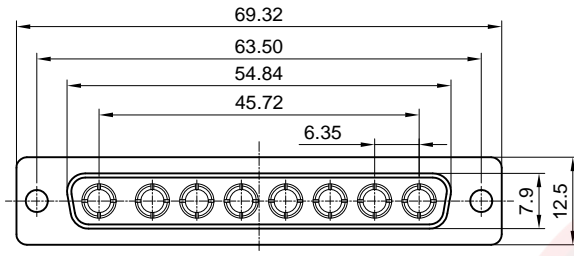


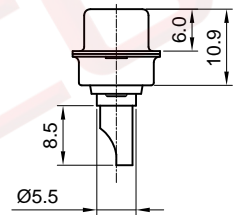
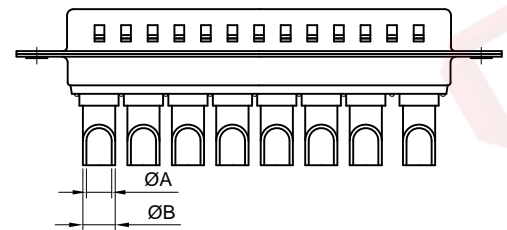
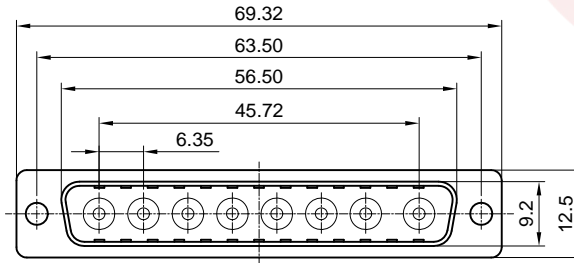
Dept	
Qty	
DC	1
ED	1
IE	1
ISO	1
PD	1
R&D	1
SD	1
QA	1
QC	1
QE	1

The information provided herein is from CONNELY Electronic Co., Ltd. and is confidential. Any disclosure to a party other than the recipient is prohibited. The intellectual properties and its rights contained herein, including but not limited to, trademarks, patents, copyrights, trade secrets, and technical know-how, are owned exclusively by CONNELY or its affiliates. Unauthorized use or reproduction of any part of this document is strictly prohibited. CONNELY reserves the right to make changes to this document without notice. CONNELY may enforce its intellectual property rights at its own discretion, failures or delays to exercise such rights does not constitute a waiver of such rights.

[Female]



[Male]



Type	Current Rating	ØA	ØB
1	10A	Ø1.7	Ø2.5
2	20A	Ø2.6	Ø3.6
3	30A	Ø3.4	Ø4.4
4	40A	Ø4.8	Ø5.5

REV.	DESCRIPTION	DRAWN	CHECKED	APPROVED
A	NEW RELEASE	LJC 07/12/14'		
B	DRAWING UPDATE	JLZ 07/15/20'		

NOTES:

- Electrical characteristics:
 - Contact resistance: 10mΩ Max. Initial.
 - Dielectric withstanding voltage: 500V AC(rms)for 1 minute.
 - Insulation resistance: 1000MΩ Min.
 - Current rating: 10~40A .
 - Voltage rating: 300V.
- Environment characteristics:
 - Temperature range: -40° C ~ +105° C.
- Mechanical characteristics:
 - Durability: 500 cycles.
- Materials:
 - Shell: SPCC.
 - Contact: Copper alloy.
 - Insulator: Thermoplastic UL 94V-0,Glass fiber filled.
- Part number code:

DS1033-09- X X X X X

- Current rating
1: 10A 2: 20A
3: 30A 4: 40A
- Contact plating
8: Full gold flash
C: Full 3u" gold
- Shell plating
N: Fornt shell nickel,Back shell tin
- Housing color
B: Black
W: White
L: Blue
- Connector type
M: Male
F: Female



(Series Image-Reference Only)

GENERAL TOLERANCE		ANGLE TOLERANCE	
X.	±0.60	X.	±5°
.X	±0.38	.X	±3°
.XX	±0.25	.XX	±2°

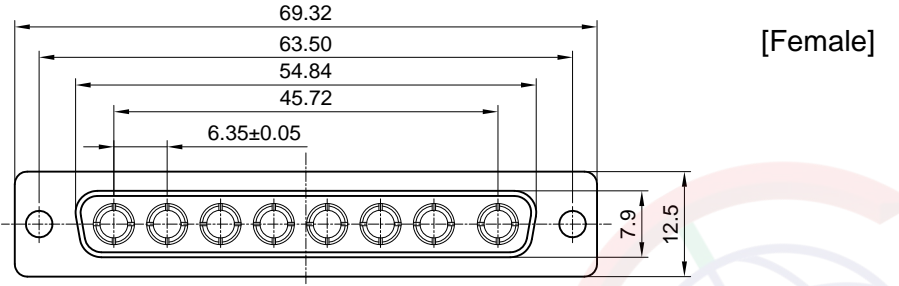
DRAWING TYPE	CUSTOMER		
SCALE	1:1	SHEET	1 OF 1
DRAWING NO.	C-DS1033-09-XXXX-B		

PROJECTION	TITLE
	MACHINE PIN D-SUB 8W8
UNITS	Solder Type W/O Terminals
SHEET SIZE	SERIES DS1033-09 SERIES

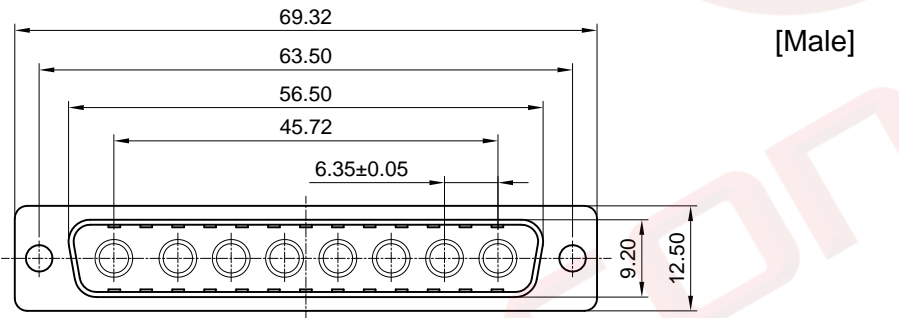
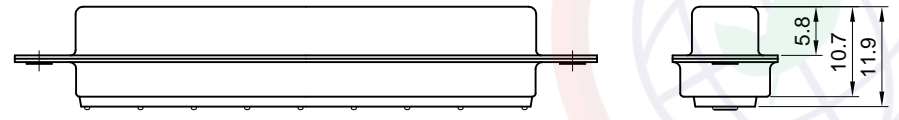
晨翔电子有限公司
CONNFLY ELECTRONIC CO. LTD

Dept	
Qty	
DC	1
ED	1
IE	1
ISO	1
PD	1
R&D	1
SD	1
QA	1
QC	1
QF	1

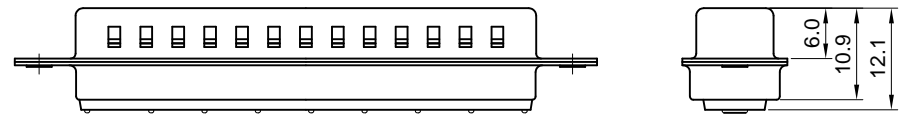
The information provided herein is from CONNELY Electronic Co., Ltd. and is confidential. Any disclosure to a party other than the recipient is prohibited. The intellectual properties and its rights contained herein, including but not limited to, trademarks, patents, copyrights, trade secrets, and technical know-how, are owned exclusively by CONNELY or its affiliates. Unauthorized use or reproduction of any part of this document is strictly prohibited. CONNELY reserves the right to modify the product specifications without notice. CONNELY may enforce its intellectual property rights at its own discretion, failures or delays to exercise such rights does not constitute a waiver of such rights.



[Female]



[Male]



REV.	DESCRIPTION	DRAWN	CHECKED	APPROVED
A	NEW RELEASE	LJC 07/12/14'		
B	DRAWING UPDATE	JLZ 07/15/20'		

NOTES:

- Electrical characteristics:
 - Contact resistance: 10mΩ Max. Initial.
 - Dielectric withstanding voltage: 500V AC(rms)for 1 minute.
 - Insulation resistance: 1000MΩ Min.
 - Current rating: 40A per pin Max.
 - Voltage rating: 300V.
- Environment characteristics:
 - Temperature range: -40° C ~ +105° C.
- Mechanical characteristics:
 - Durability: 500 cycles.
- Materials:
 - Shell: SPCC.
 - Insulator: Thermoplastic UL 94V-0,Glass fiber filled.
- PART NUMBER CODE:

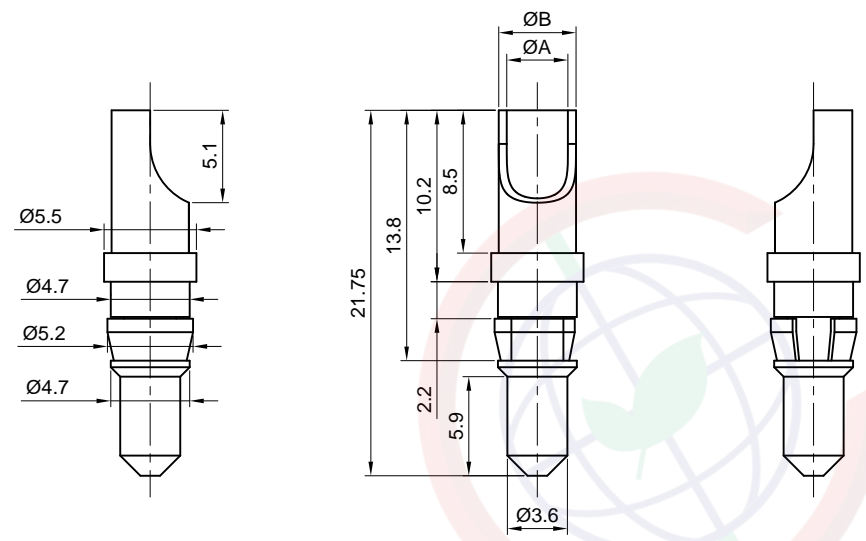
HP-DS1033-09- X X X X 0

- Housing color
 - B: Black
 - W: White
 - L: Blue
- Shell plating
 - N: Fornt shell nickel,Back shell tin
- Connector type
 - M: Male
 - F: Female
- No.of contacts
 - 08: 8Pos

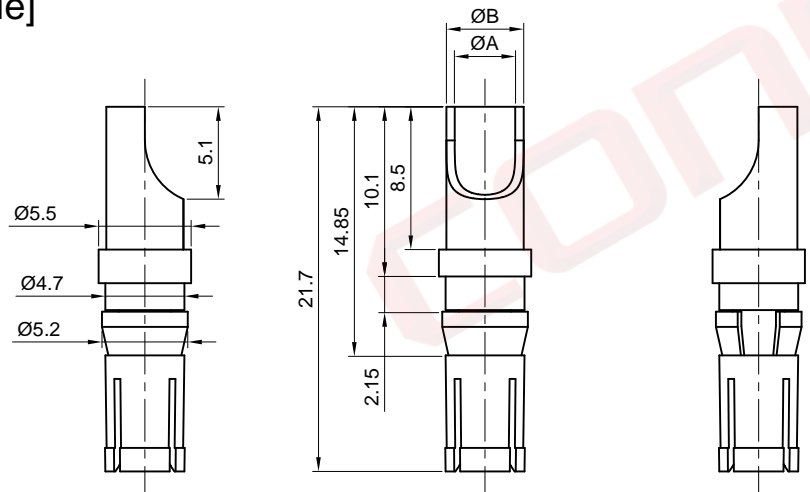
GENERAL TOLERANCE		ANGLE TOLERANCE		PROJECTION		TITLE	MACHINE PIN D-SUB 8W8	
X.	±0.60	X.	±5°	UNITS	mm	Solder Type W/O Terminals		
.X	±0.38	.X	±3°	SHEET SIZE	A4	SERIES	DS1033-09 SERIES	
.XX	±0.25	.XX	±2°	晨翔电子有限公司 CONNFLY ELECTRONIC CO. LTD				
DRAWING TYPE		CUSTOMER						
SCALE		1:1	SHEET 1 OF 1					
DRAWING NO.		C-HP-DS1033-09-XXXX0-B						

The information provided herein is from CONNELY Electronic Co., Ltd. and is confidential. Any disclosure to a party other than the recipient is prohibited. The intellectual properties and its rights contained herein, including but not limited to, trademarks, patents, copyrights, trade secrets, and technical know-how, are owned exclusively by CONNELY or its affiliates. Unauthorized use or reproduction of any part of this document is strictly prohibited. CONNELY may enforce its intellectual property rights at its own discretion, failures or delays to exercise such rights does not constitute a waiver of such rights.

[Male]



[Female]

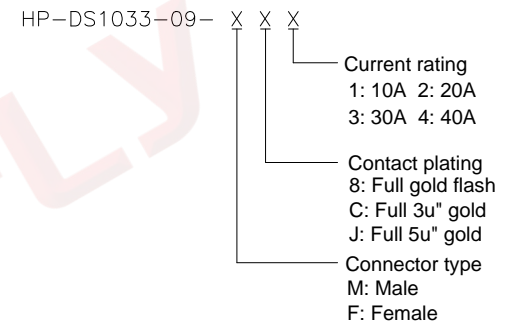


TYPE	CURRENT RATING	ØA	ØB
1	10A	Ø1.7	Ø2.5
2	20A	Ø2.6	Ø3.6
3	30A	Ø3.4	Ø4.4
4	40A	Ø4.6	Ø5.5

REV.	DESCRIPTION	DRAWN	CHECKED	APPROVED
A	NEW RELEASE	JLZ 08/07/20'		

NOTES:

- Electrical characteristics:
 - Contact resistance: 10mΩ Max. Initial.
 - Current rating: 10~40A .
 - Voltage rating: 300V.
- Environment characteristics:
 - Temperature range: -40° C ~ +105° C.
- Mechanical characteristics:
 - Durability: 500 cycles.
- Materials:
 - Contact: Copper alloy
 - Clip: Copper alloy.
- Part number code:



GENERAL TOLERANCE		ANGLE TOLERANCE		PROJECTION		TITLE	Machine Pin
X.	±0.60	X.	±5°	UNITS	mm	Solder Type Terminals	
.X	±0.38	.X	±3°	SHEET SIZE	A4	SERIES	DS1033-09 SERIES
.XX	±0.25	.XX	±2°	晨翔电子有限公司 CONNELY ELECTRONIC CO. LTD			
DRAWING TYPE		CUSTOMER					
SCALE	1:1	SHEET	1 OF 1				
DRAWING NO.		C-HP-DS1033-09-XXX-A					