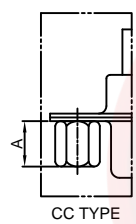
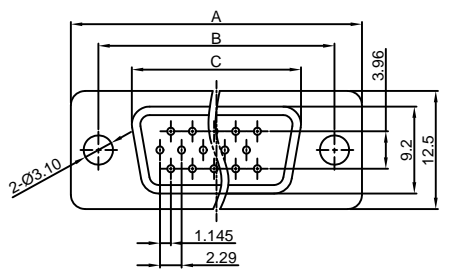
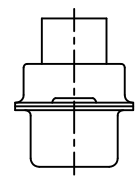
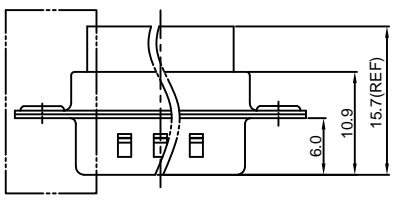


Dept Qty
 DC 1
 ED 1
 IE 1
 ISO 1
 PD 1
 R&D 1
 SD 1
 QA 1
 QC 1
 QF 1

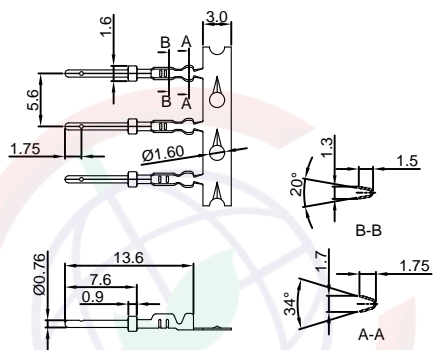
The information provided herein is from CONNELY Electronic Co., Ltd. and is confidential. Any disclosure to a party other than the recipient is prohibited. The intellectual properties and its rights contained herein, including but not limited to, trademarks, patents, copyrights, trade secrets, and technical know-how, are owned exclusively by CONNELY or its affiliates. Unauthorized use or reproduction of any part of this document is strictly prohibited. CONNELY may enforce its intellectual property rights at its own discretion, failures or delays to exercise such rights does not constitute a waiver of such rights. Its use in any format or manner. CONNELY may enforce its intellectual property rights at its own discretion, failures or delays to exercise such rights does not constitute a waiver of such rights.

Male

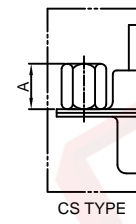
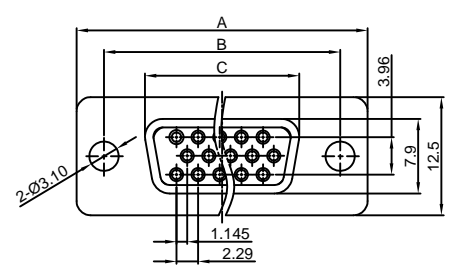
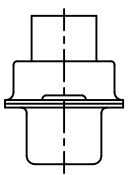
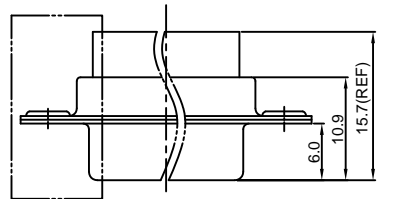


Male terminal
 P/N Code:
 T - DS1035-02 - P C X 0 0

Contact plating
 0: Selective gold flash
 8: Full gold flash

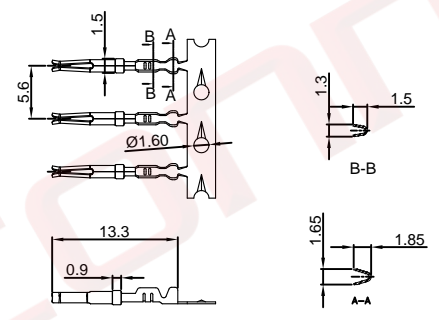


Female



Female terminal
 P/N Code:
 T - DS1035-02 - S C X 0 0

Contact plating
 0: Selective gold flash
 8: Full gold flash



REV.	DESCRIPTION	DRAWN	CHECKED	APPROVED
A	NEW RELEASE	YCH 10/06/10'		LJC 10/06/10'
B	DRAWING UPDATE	JLZ 12/11/19'		

- NOTES:
- Electrical characteristics:
 - Contact resistance: 20mΩ Max. Initial.
 - Dielectric withstanding voltage: 500V AC(rms) for 1 minute.
 - Insulation resistance: 1000MΩ Min.
 - Environment characteristics:
 - Temperature range: -40°C~+105°C.
 - Materials:
 - Insulator: PBT+Glass fiber
 - Shell: Steel
 - Contact: Copper alloy
 - Product number code:
 DS1035-02 - XX X X X X X X

- Screw DIM. A
 S: Standard(W/O nut)
 1: 3.00 2: 4.00
 3: 4.50 4: 5.00
 5: 5.50 6: 5.80
- Screw type
 S: Standard(W/O nut)
 1: CC type
 2: CS type
- Shell plating
 T: Fornt&Back Shell Tin
 N: Fornt shell nickel,
 Back shell tin
- Housing color
 U: Blue B: Black
- Connector type
 M: Male F: Female
- No. of contacts
 15: 15pos 26: 26pos
 44: 44pos 62: 62pos

Position	A±0.2	B±0.2	C±0.2	
			Male	Female
15P	30.80	24.99	17.90	16.33
26P	39.14	33.32	26.50	24.66
44P	53.04	47.04	40.00	38.38
62P	69.32	63.50	56.50	54.84



(Series Image-Reference Only)

GENERAL TOLERANCE		ANGLE TOLERANCE		PROJECTION	TITLE
X.	±0.60	X.	±5°		H.D-SUB CRIMP TYPE
.X	±0.38	.X	±3°	UNITS	mm
.XX	±0.25	.XX	±2°	SHEET SIZE	A4
DRAWING TYPE		CUSTOMER		SERIES	DS1035-02 SERIES
SCALE		1:1		SHEET 1 OF 1	
DRAWING NO.		C-DS1035-02-XXXXXX-B		晨翔电子有限公司 CONNFLY CONNELY ELECTRONIC CO. LTD	