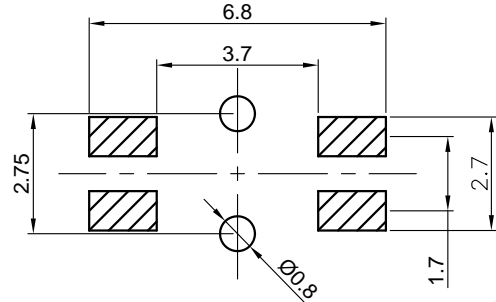
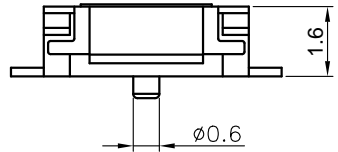
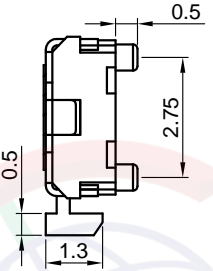
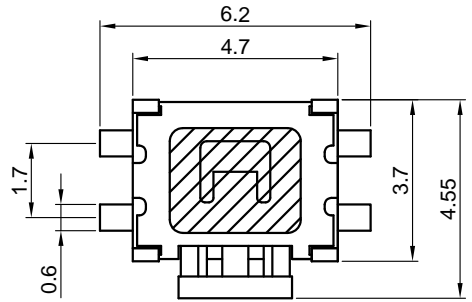
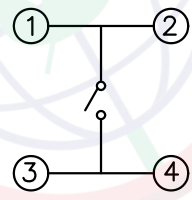


Dept	
Qty	
DC	1
ED	1
IE	1
ISO	1
PD	1
R&D	1
SD	1
QA	1
QC	1
QE	1

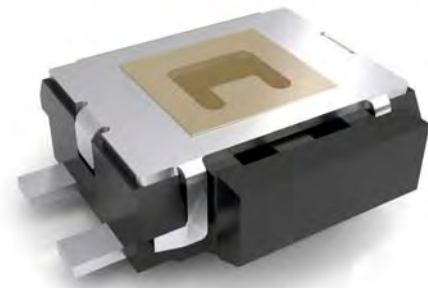
The information provided herein is from CONNELY Electronic Co., Ltd. and is confidential. Any disclosure to a party other than the recipient is prohibited. The intellectual properties and its rights contained herein, including but not limited to, trademarks, patents, copyrights, trade secrets, and technical know-how, are owned exclusively by CONNELY or its affiliates. Unauthorized use or modification is strictly prohibited. CONNELY may enforce its intellectual property rights at its own discretion, failure or delays to exercise such rights does not constitute a waiver of such rights.



Recommend PCB layout  
Tolerance:±0.05



Circuit diagram



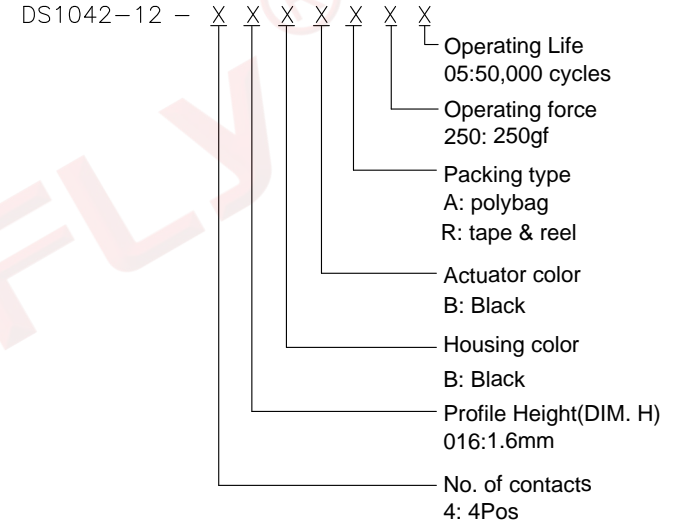
(Series Image-Reference Only)

REV.	DESCRIPTION	DRAWN	CHECKED	APPROVED
A	NEW RELEASE	JLZ 01/12/18'	HZW 01/12/18'	LJC 01/12/18'
B	DRAWING UPDATE	JLZ 01/17/19'		

NOTES:

- Specifications:
  - Contact Rating: 50mA at 12V DC
  - Insulation Resistance:100MΩ min.
  - Contact Resistance:100mΩ max.
  - Dielectric Withstanding Voltage: 250V AC(rms) for 1 minute.
  - Operating Life:50,000 cycles
  - Travel:0.25±0.1mm
  - Operation Temperature Range: -25°C to +70°C
  - Wave Soldering: Recommended Solder Temperature at 500°F(260°C)max. 5 Seconds
  - Hand Soldering: Use Soldering Iron Of 30 Watts,Controlled at 608°F(320°C)Approximately 2 Seconds.

2. Product number code:



GENERAL TOLERANCE		ANGLE TOLERANCE	
X.	±0.60	X.	±5°
.X	±0.38	.X	±3°
.XX	±0.25	.XX	±2°
DRAWING TYPE	CUSTOMER		
SCALE	1:1	SHEET	1 OF 1
DRAWING NO.	C-DS1042-12-XXXXXX-B		

PROJECTION		TITLE	
UNITS	mm	TACT SWITCH SMT TYPE 4.7mmX3.7mm	
SHEET SIZE	A4	SERIES	DS1042-12 SERIES

晨翔电子有限公司  
CONNELY ELECTRONIC CO. LTD