

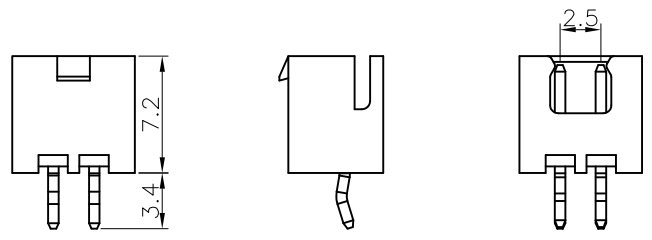
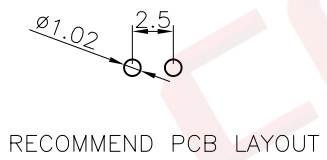
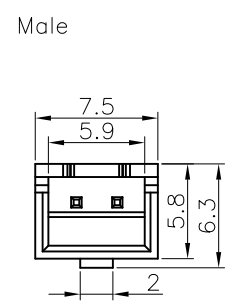
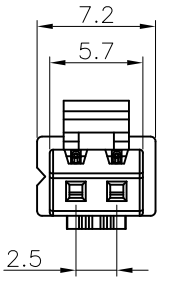
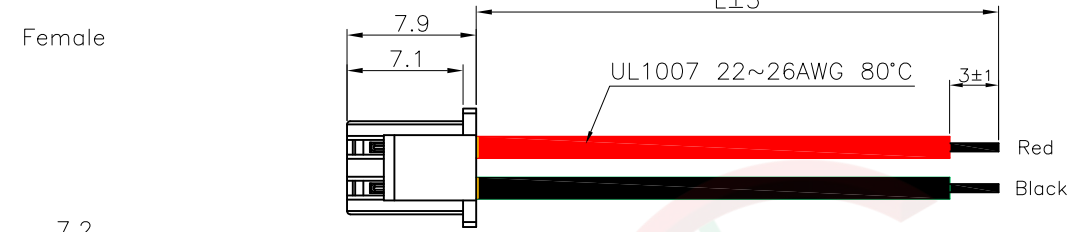
REV.	DESCRIPTION	DRAWN	CHECKED	APPROVED
A	NEW RELEASE	JLZ 01/12/15'		

NOTES:

- Materials:
  - Housing material: NYLON 66
  - Contact: Copper Alloy
  - Wire Insulator: PVC
  - Wire: Tin Plated Copper
- Specifications:
  - Current Rating: 1.5A
  - Voltage Rating: 250V AC/DC
  - Contact Resistance: 20mΩ Max.(Connector Only)
  - Insulation resistance: 1000MΩ Min.(Connector Only)
  - Wire Range: AWG#22~26
- Packing Type: PE Bag+Inner Box+Outer Box
- Product Number Code:

DS1069-04 - X X X X X X X

- WIRE LENGTH(FEMALE ONLY, DIM L)
  - 080: 80mm
  - 180: 180mm
- HOUSING COLOR
  - W: White
- CONTACT PLATING
  - 6: Full Tin
  - 8: Full Gold
- MOUNTING TYPE
  - C: Crimp(Female Only)
  - V: V/T(Male Only)
- WIRE GAUGE(Female Only)
  - 26: AWG #26
  - 24: AWG #24
  - 22: AWG #22
- CONNECTOR TYPE
  - F: Female
  - M: Male
- No.OF CONTACTS
  - 2



GENERAL TOLERANCE		ANGLE TOLERANCE	
X.	±0.60	X.	±5°
.X	±0.38	.X	±3°
.XX	±0.25	.XX	±2°

PROJECTION	TITLE
	2.5mm NEW XH TYPE DOUBLE LOCK TYPE
UNITS	mm
SHEET SIZE	A4
SERIES	DS1069-04 SERIES

DRAWING TYPE	CUSTOMER		
SCALE	1:1	SHEET	1 OF 1
DRAWING NO.	C-DS1069-04-XXXXXXX-A		

晨翔电子有限公司  
CONNFLY CONNFLY ELECTRONIC CO., LTD