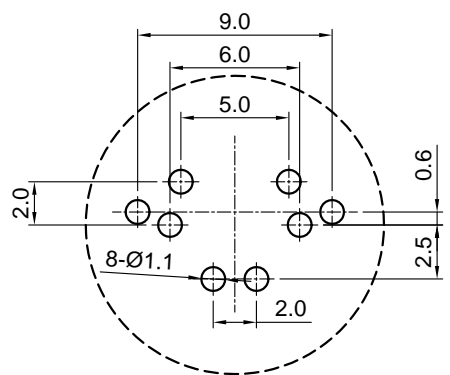
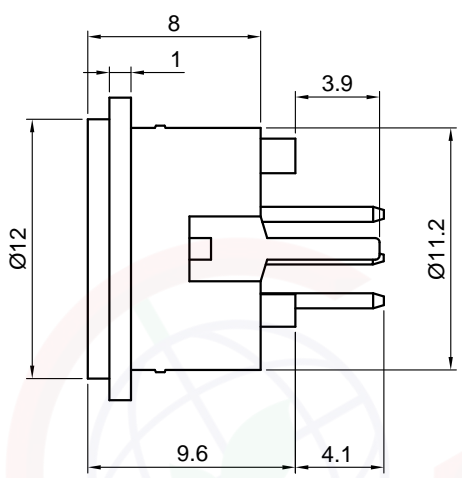
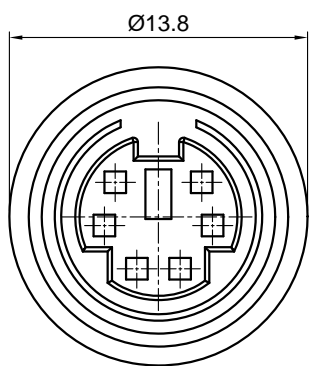


Dept	
Qty	
DC	1
ED	1
IE	1
ISO	1
PD	1
R&D	1
SD	1
QA	1
QC	1
QE	1

The information provided herein is from CONNPLY Electronic Co., Ltd. and is confidential. Any disclosure to a party other than the recipient is prohibited. The intellectual properties and its rights contained herein, including but not limited to, trademarks, patents, copyrights, trade secrets, and technical know-how, are owned exclusively by CONNPLY or its affiliates. Unauthorized use or modification is strictly prohibited. CONNPLY may enforce its intellectual property rights at its own discretion, failure or delays to exercise such rights does not constitute a waiver of such rights.

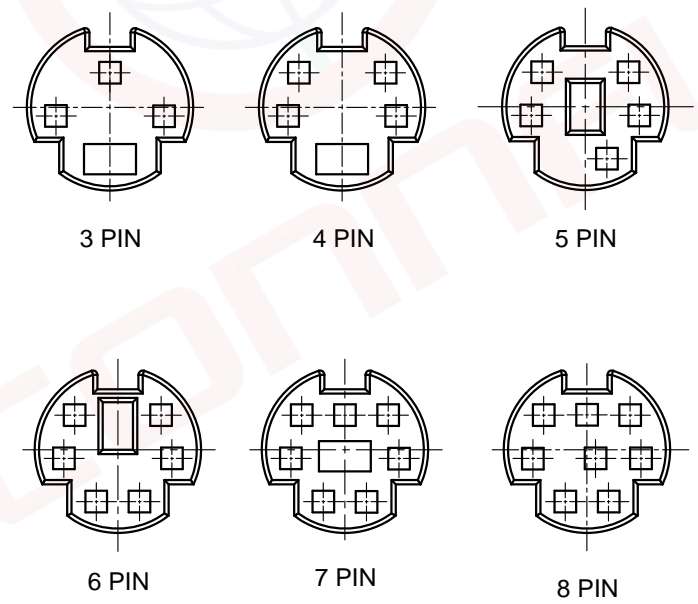
REV.	DESCRIPTION	DRAWN	CHECKED	APPROVED
A	NEW RELEASE	JLZ 09/24/15'		
B	DRAWING UPDATE	JLZ 06/06/22'		



Recommended PCB layout  
Tolerance: ±0.05(6 pin)



(Series Image-Reference Only)

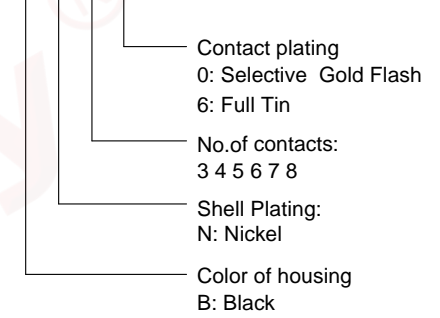


Notes:

- Specifications:
  - 1.0 Voltage rating: 12V DC.
  - 1.1 Contact current rating: 1A Max. Per pin.
  - 1.2 Contact resistance: 30 Milliohms Max.
  - 1.3 Dielectric withstanding voltage: 500V AC(rms) for 1 minute.
  - 1.4 Insulation resistance: 50 Megaohms min.
  - 1.5 Operating temperature: -20°C~+85°C.

2. Product number code:

DS1093-09 - X X X X



GENERAL TOLERANCE		ANGLE TOLERANCE		PROJECTION		TITLE	
X.	±0.60	X.	±5°	UNITS	mm	Mini Din Socket	
.X	±0.38	.X	±3°	SHEET SIZE	A4	SERIES	DS1093-09 SERIES
.XX	±0.25	.XX	±2°	<b>晨翔电子有限公司</b> <b>CONNPLY ELECTRONIC CO., LTD</b>			
DRAWING TYPE		CUSTOMER					
SCALE	1:1	SHEET	1 OF 1				
DRAWING NO.		C-DS1093-09-XXXX-B					