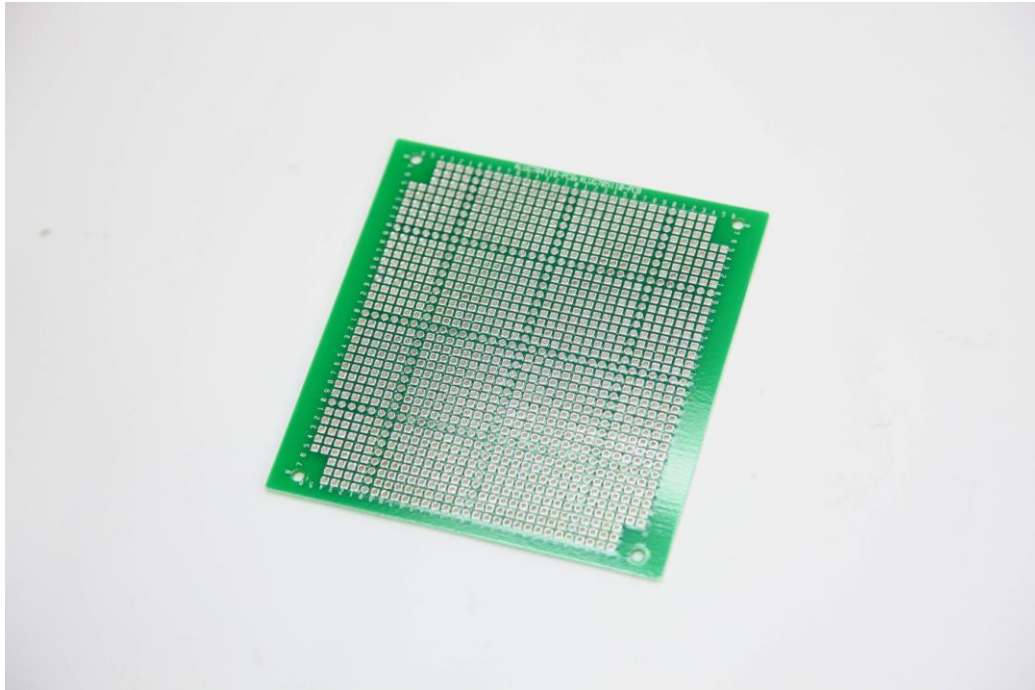


Optional PCB



- Material of the PCB : Glass epoxy board (FR-4) ,both sides ,
- Thickness of the PCB is 1.6mm, hole & hole distance is 2.54mm
-

| Item number | External Dimension |
|----------------|----------------------|
| ALUG702040-PCB | 32 x 53.3 x 1.6 mm |
| ALUG702080-PCB | 72 x 53.3 x 1.6 mm |
| ALUG702120-PCB | 112 x 53.3 x 1.6 mm |
| ALUG704060-PCB | 52 x 98.3 x 1.6 mm |
| ALUG704110-PCB | 102 x 98.3 x 1.6 mm |
| ALUG704160-PCB | 152 x 98.3 x 1.6 mm |
| ALUG705060-PCB | 52 x 98.3 x 1.6 mm |
| ALUG705110-PCB | 102 x 98.3 x 1.6 mm |
| ALUG705160-PCB | 152 x 98.3 x 1.6 mm |
| ALUG706080-PCB | 72 x 129.8 x 1.6 mm |
| ALUG706120-PCB | 112 x 129.8 x 1.6 mm |
| ALUG706160-PCB | 152 x 129.8 x 1.6 mm |
| ALUG706200-PCB | 192 x 129.8 x 1.6 mm |

| | |
|----------------|----------------------|
| ALUG708080-PCB | 72 x 159.8 x 1.6 mm |
| ALUG708120-PCB | 112 x 159.8 x 1.6 mm |
| ALUG708160-PCB | 152 x 159.8 x 1.6 mm |
| ALUG708200-PCB | 192 x 159.8 x 1.6 mm |

Optional PCB stopper

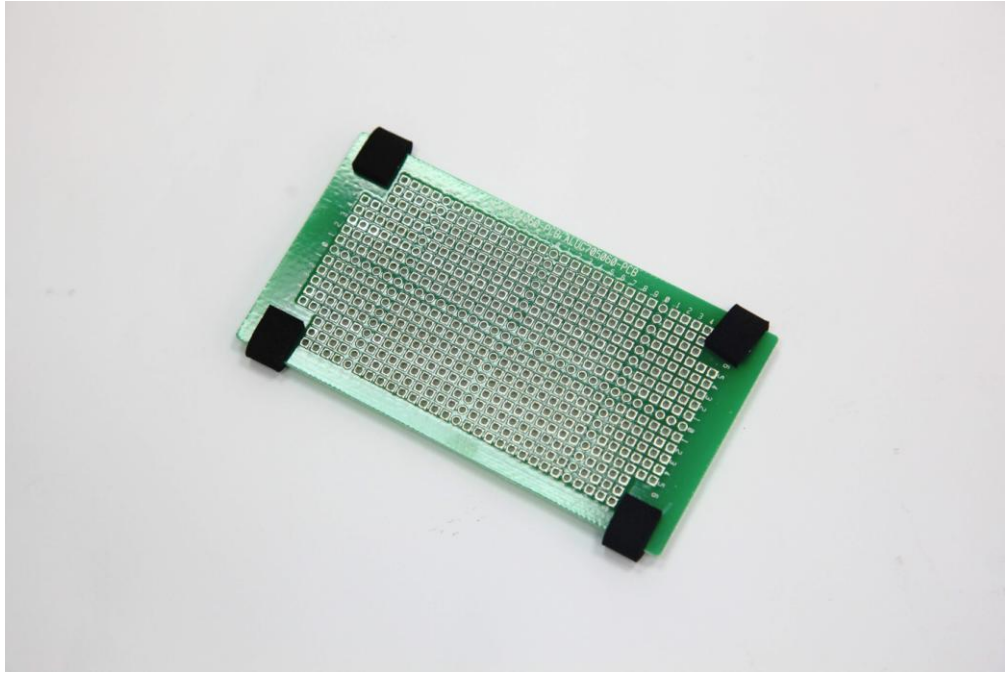


- **Material of PCB Stopper : CR (Neoprene) with 3M Glue adhesive tape**
- **20 PCS/BAG**

| Item number | External Dimension |
|-----------------|--------------------|
| ALUG7XX-PCBSTOP | 22 X 8 x 3 mm |

Application →

Affix the PCB STOPPER on the four corners of the PCB



The PCB is able to be installed inside of the aluminium body well

